

KING

HOME 703 E



3BD.35A

**3 Bedroom
2 Bathroom**

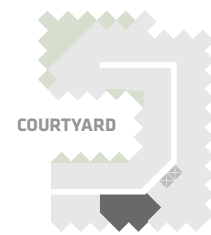
**Total Living:
1316 ft²**

Interior Living:
1173 ft²

Exterior Living:
143 ft²

LIVING	11' 8" x 9' 3"
DINING	13' 1" x 8' 2"
MASTER BD	12' 4" x 8' 8"
BEDROOM 2	10' 8" x 11' 0"
BEDROOM 3	11' 4" x 8' 10"
BALCONY	11' 0" x 4' 11"

KING STREET WEST



EAST MOUNTAIN KEYPLAN



All dimensions and specifications are approximate. Certain plans are reverse or mirror image. Balcony square footages are estimated and may vary from that stated. Please see Sales Representative for details. Furniture not included. Refer to key plan for unit location and orientation. E. 6 O.E.

KING

HOME 705 E



3BD.36

**3 Bedroom
2 Bathroom**

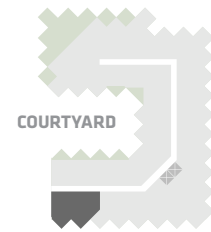
**Total Living:
1373 ft²**

Interior Living:
1230 ft²

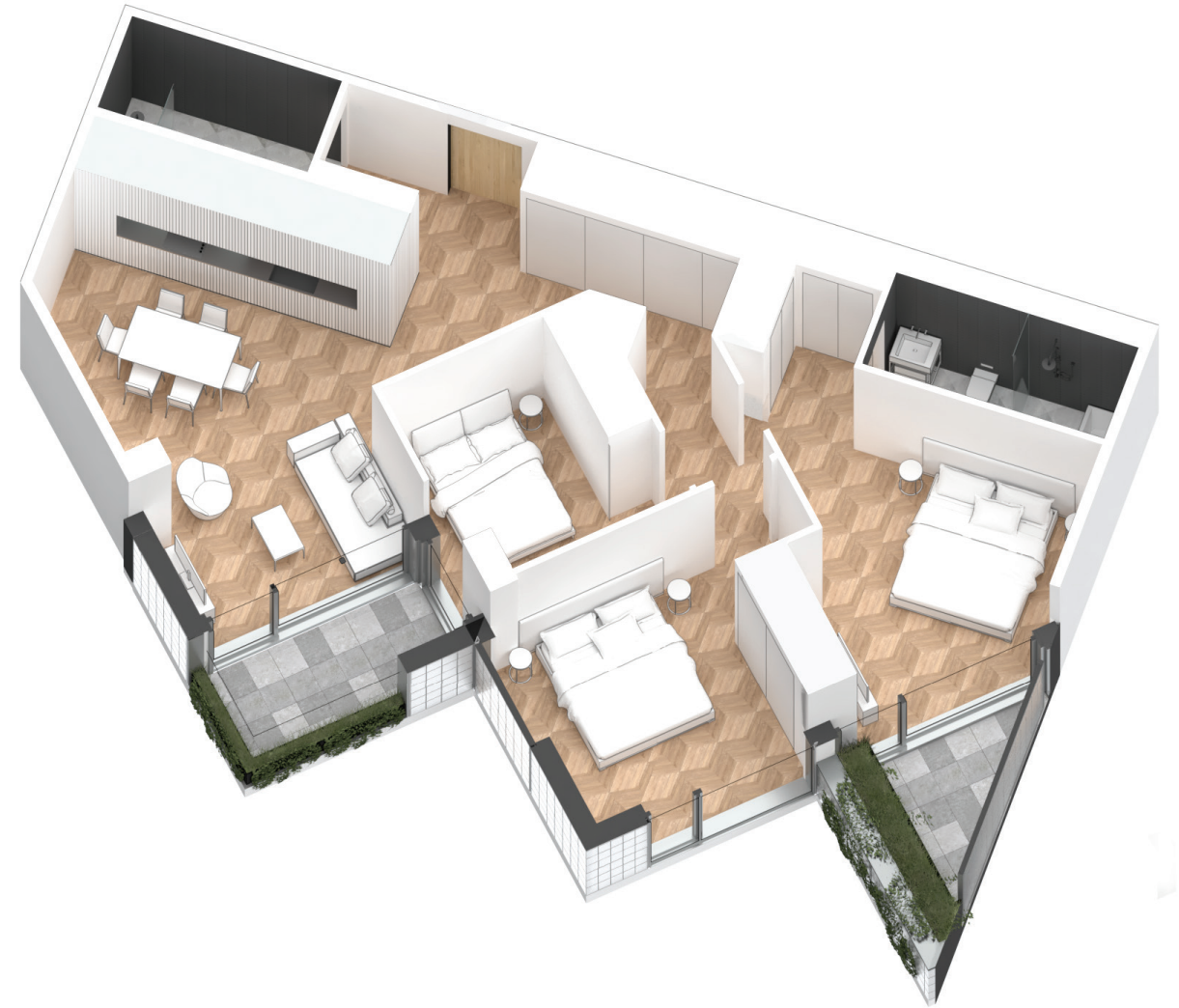
Exterior Living:
143 ft²

LIVING	11' 8" x 10' 6"
DINING	15' 8" x 7' 8"
MASTER BD	11' 0" x 8' 11"
BEDROOM 2	11' 0" x 12' 0"
BEDROOM 3	8' 6" x 8' 9"
BALCONY	11' 0" x 4' 11"
TERRACE	6' 4" x 8' 6"

KING STREET WEST



EAST MOUNTAIN KEYPLAN



All dimensions and specifications are approximate. Certain plans are reverse or mirror image. Balcony square footages are estimated and may vary from that stated. Please see Sales Representative for details. Furniture not included. Refer to key plan for unit location and orientation. E. 6 O.E.

KING

HOME 803 E



3BD.35A

**3 Bedroom
2 Bathroom**

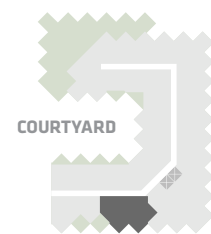
**Total Living:
1245 ft²**

Interior Living:
1173 ft²

Exterior Living:
72 ft²

LIVING	11' 8" x 9' 3"
DINING	13' 1" x 8' 2"
MASTER BD	12' 4" x 8' 8"
BEDROOM 2	10' 8" x 11' 0"
BEDROOM 3	11' 4" x 8' 10"
BALCONY	11' 0" x 4' 11"

KING STREET WEST



COURTYARD

EAST MOUNTAIN KEYPLAN



All dimensions and specifications are approximate. Certain plans are reverse or mirror image. Balcony square footages are estimated and may vary from that stated. Please see Sales Representative for details. Furniture not included. Refer to key plan for unit location and orientation. E. & O.E.

KING

HOME 1015 E



3BD.05

**3 Bedroom
2 Bathroom**

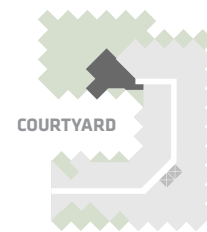
**Total Living:
1573 ft²**

Interior Living:
1175 ft²

Exterior Living:
399 ft²

LIVING	11' 10" X 13' 2"
DINING	8' 6" X 14' 6"
MASTER BD	10' 8" X 10' 8"
BEDROOM 2	9' 2" X 10' 2"
BEDROOM 3	10' 4" X 8' 9"
BALCONY	7' 9" X 13' 0"
TERRACE A	6' 8" X 8' 3"

KING STREET WEST



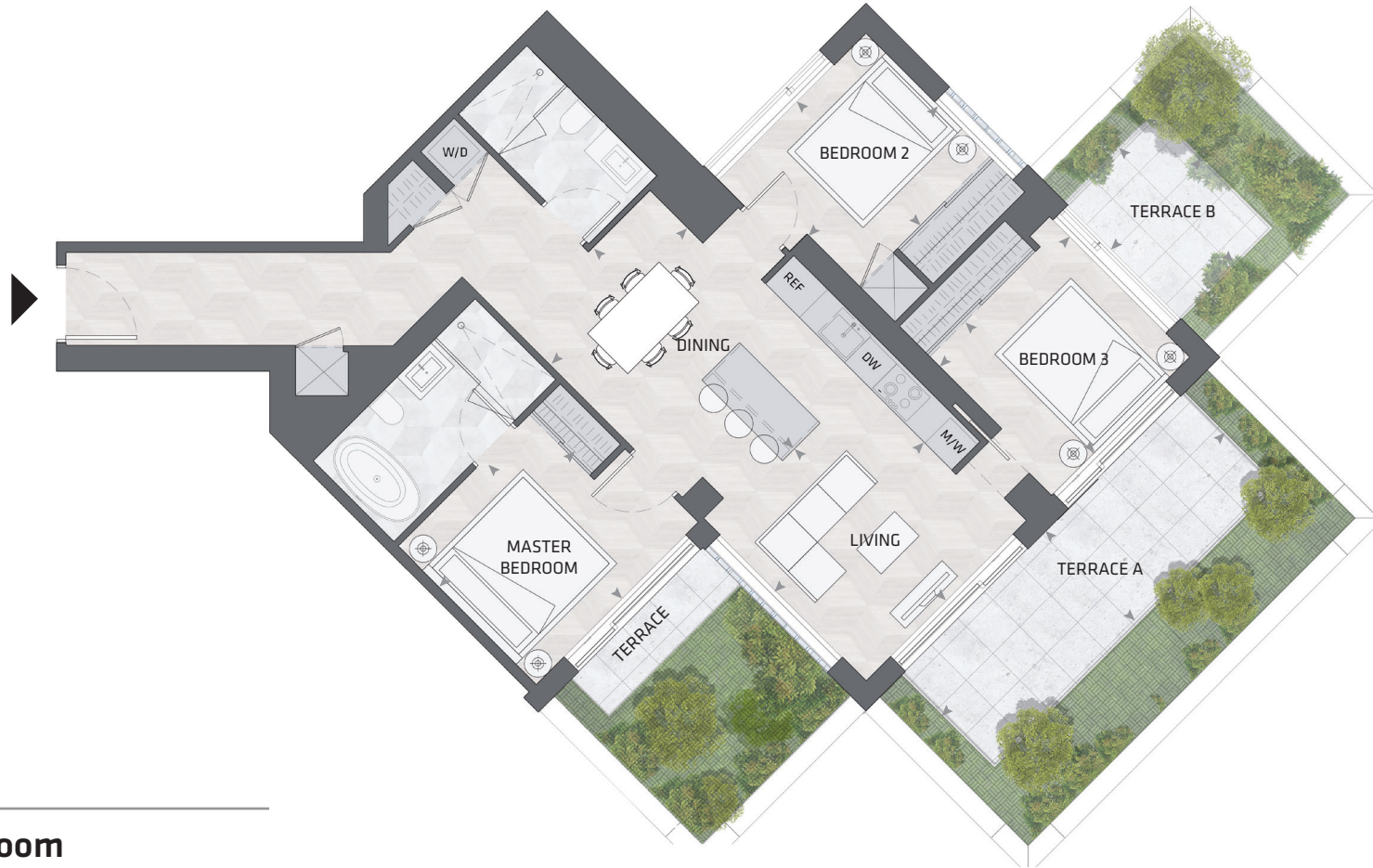
EAST MOUNTAIN KEYPLAN



All dimensions and specifications are approximate. Certain plans are reverse or mirror image. Balcony square footages are estimated and may vary from that stated. Please see Sales Representative for details. Furniture not included. Refer to key plan for unit location and orientation. E. & O.E.

KING

HOME 1115 E



3BD.11

**3 Bedroom
2 Bathroom**

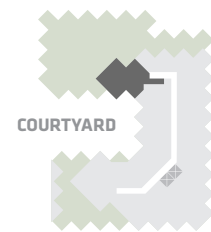
**Total Living:
1607 ft²**

Interior Living:
1153 ft²

Exterior Living:
454 ft²

LIVING	11' 1" X 10' 11"
DINING	14' 7" X 10' 11"
MASTER BD	11' 0" X 9' 4"
BEDROOM 2	9' 6" X 9' 6"
BEDROOM 3	9' 6" X 9' 6"
TERRACE A	6' 8" X 20' 3"
TERRACE B	8' 3" X 6' 8"

KING STREET WEST



EAST MOUNTAIN KEYPLAN



All dimensions and specifications are approximate. Certain plans are reverse or mirror image. Balcony square footages are estimated and may vary from that stated. Please see Sales Representative for details. Furniture not included. Refer to key plan for unit location and orientation. E. & O.E.

KING

HOME 1203 E



3BD.19

**3 Bedroom
2 Bathroom**

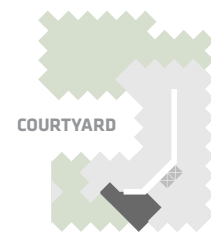
**Total Living:
1132 ft²**

Interior Living:
988 ft²

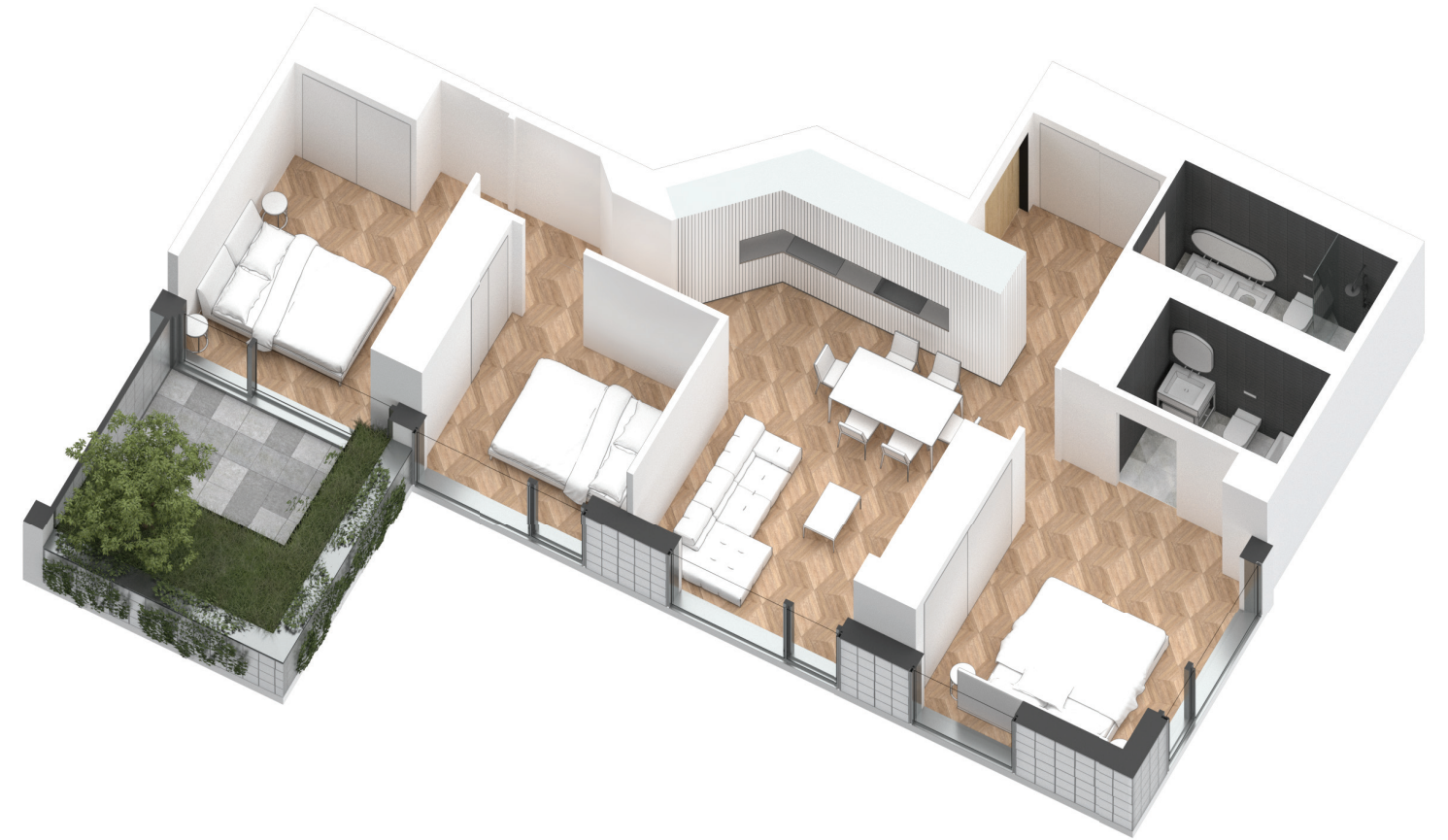
Exterior Living:
143 ft²

LIVING	8' 10" X 11' 6"
DINING	6' 7" X 11' 6"
MASTER BD	13' 6" X 10' 4"
BEDROOM 2	8' 6" X 10' 0"
BEDROOM 3	10' 10" X 9' 7"
TERRACE	6' 8" X 9' 1"

KING STREET WEST



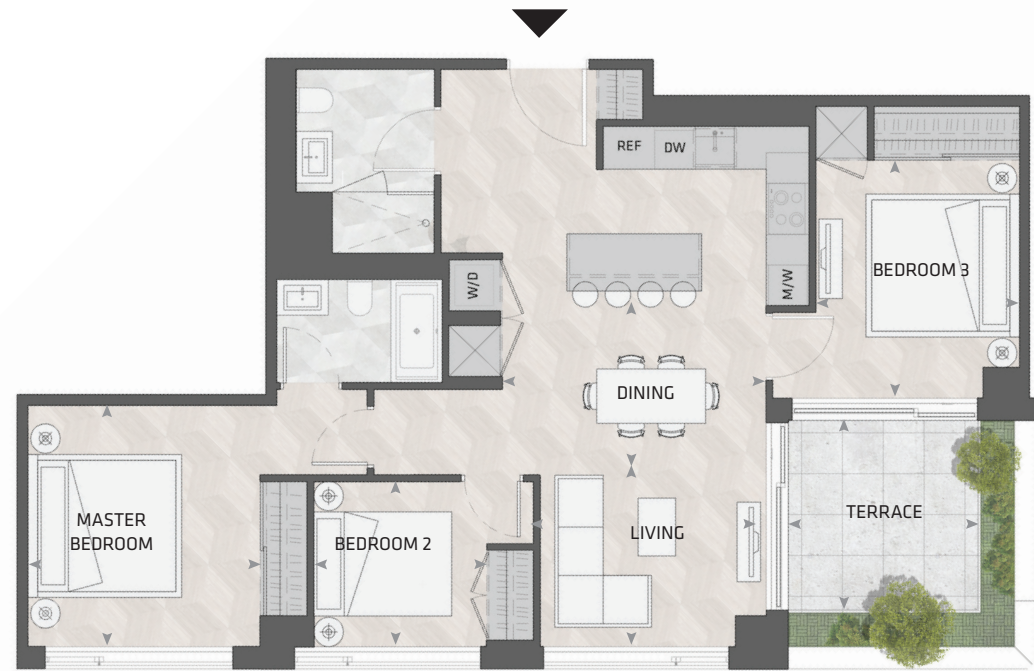
EAST MOUNTAIN KEYPLAN



All dimensions and specifications are approximate. Certain plans are reverse or mirror image. Balcony square footages are estimated and may vary from that stated. Please see Sales Representative for details. Furniture not included. Refer to key plan for unit location and orientation. E. & O.E.

KING

HOME 1503 E



3BD.25

**3 Bedroom
2 Bathroom**

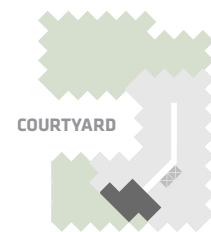
**Total Living:
1191 ft²**

Interior Living:
1048 ft²

Exterior Living:
143 ft²

LIVING	10' 11" X 8' 3"
DINING	12' 8" X 8' 1"
MASTER BD	10' 8" X 11' 8"
BEDROOM 2	8' 4" X 8' 0"
BEDROOM 3	9' 10" X 11' 10"
TERRACE	9' 1" X 9' 1"

KING STREET WEST



EAST MOUNTAIN KEYPLAN



All dimensions and specifications are approximate. Certain plans are reverse or mirror image. Balcony square footages are estimated and may vary from that stated. Please see Sales Representative for details. Furniture not included. Refer to key plan for unit location and orientation. E. 6 O.E.

KING

HOME 1509 E



3BD.24

**3 Bedroom
2 Bathroom**

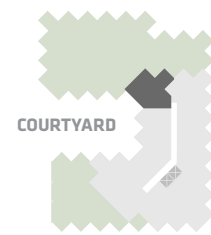
**Total Living:
1618 ft²**

Interior Living:
1021 ft²

Exterior Living:
597 ft²

LIVING	11' 8" x 11' 0"
DINING	13' 7" x 7' 11"
MASTER BD	11' 3" x 10' 2"
BEDROOM 2	11' 2" x 8' 6"
BEDROOM 3	9' 8" x 9' 8"
TERRACE A	9' 1" x 6' 8"
TERRACE B	6' 8" x 9' 1"

KING STREET WEST



EAST MOUNTAIN KEYPLAN



All dimensions and specifications are approximate. Certain plans are reverse or mirror image. Balcony square footages are estimated and may vary from that stated. Please see Sales Representative for details. Furniture not included. Refer to key plan for unit location and orientation. E. & O.E.

KING

HOME 1205 E



3BD.20

**3 Bedroom
2 Bathroom**

**Total Living:
1366 ft²**

Interior Living:
1223 ft²

Exterior Living:
143 ft²

**LIVING/
DINING** 13' 4" X 8' 8"
BEDROOM 8' 6" X 8' 8"

KING STREET WEST

COURTYARD

EAST MOUNTAIN KEYPLAN



All dimensions and specifications are approximate. Certain plans are reverse or mirror image. Balcony square footages are estimated and may vary from that stated. Please see Sales Representative for details. Furniture not included. Refer to key plan for unit location and orientation. E. & O.E.